

Sample Name: **Cherry Noir CRJ (Indigo-965) Primary**
 Tested for: **Willamette Valley Alchemy**
Compliance Extract



Laboratory ID: 21C0131-05

Matrix: Extracts and Concentrates

Sample Metric ID: 1A4010300003909000014197

Lot # NA

Batch RFID: 1A4010300003909000014146

Batch Size: 487 (g)

Process Date: 3/2/2021

License: 1000096CBB6

Date Sampled: 03/16/21 00:00

Date Accepted: 03/16/21

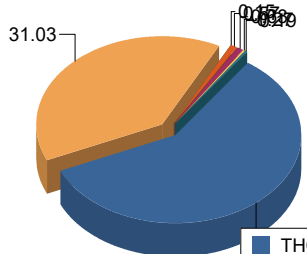
Potency Analysis

Date Extracted: 03/19/21

Analysis Method: UNODC 5.4.8

Date Analyzed: 03/19/21

* - ORELAP certified analyte

Cannabinoids	% weight	mg/g	LOQ (%)	Cannabinoids Profile																
Total THC ((THCA*0.877)+d9)	73.48	734.8	0.08	 <table border="1"> <tr><td>THC</td><td>46.26</td></tr> <tr><td>THCA</td><td>31.03</td></tr> <tr><td>CBN</td><td>0.15</td></tr> <tr><td>CBG</td><td>0.57</td></tr> <tr><td>CBGA</td><td>0.63</td></tr> <tr><td>CBC</td><td>0.27</td></tr> <tr><td>Others</td><td>0.19</td></tr> <tr><td>Total:</td><td>79.10</td></tr> </table>	THC	46.26	THCA	31.03	CBN	0.15	CBG	0.57	CBGA	0.63	CBC	0.27	Others	0.19	Total:	79.10
THC	46.26																			
THCA	31.03																			
CBN	0.15																			
CBG	0.57																			
CBGA	0.63																			
CBC	0.27																			
Others	0.19																			
Total:	79.10																			
Total CBD ((CBDA*0.877)+CBD)	0.09	0.9	0.08																	
d9-THC (d9-Tetrahydrocannabinol)*	46.26	462.6	0.08																	
d8-THC (d8-Tetrahydrocannabinol)*	0.19	1.9	0.10																	
THCA (d9-Tetrahydrocannabinolic Acid)*	31.03	310.3	0.15																	
CBD (Cannabidiol)*	< LOQ	< LOQ	0.08																	
CBDA (Cannabidiolic Acid)*	< LOQ	< LOQ	0.15																	
CBN (Cannabinol)*	0.15	1.5	0.08																	
CBG (Cannabigerol)*	0.57	5.7	0.10																	
CBGA (Cannabigerolic Acid)	0.63	6.3	0.10																	
CBDV (Cannabidivarin)*	< LOQ	< LOQ	0.10																	
CBDVA (Cannabidivarinic Acid)	< LOQ	< LOQ	0.10																	
CBC (Cannabichromene)*	0.27	2.7	0.10																	
THCV (Tetrahydrocannabivarin)	< LOQ	< LOQ	0.10																	
Total Cannabinoids	79.30	793	0.08																	

<LOQ - Results below the Limit of Quantitation - Compound not detected


 Breeanna Hamilton For Brian Weigel
 Lab Director

These results relate only to the sample included on this report. The report may not be reproduced except in full, without the written permission of SC Laboratories. Samples tested in accordance with Oregon Administrative Rules, TNI 2009 Standard and SC Laboratories quality assurance plan unless otherwise noted.

Sample Name: **Cherry Noir CRJ (Indigo-965) Duplicate**
 Tested for: **Willamette Valley Alchemy**
Compliance Extract

Laboratory ID: 21C0131-06

Matrix: Extracts and Concentrates

Sample Metrc ID: 1A4010300003909000014197

Process Date: 3/2/2021

Lot # NA

License: 1000096CBB6

Batch RFID: 1A4010300003909000014146

Date Sampled: 03/16/21 00:00

Batch Size: 487 (g)

Date Accepted: 03/16/21

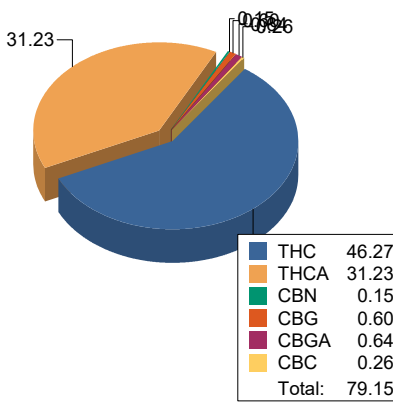
Potency Analysis

Date Extracted: 03/19/21

Analysis Method: UNODC 5.4.8

Date Analyzed: 03/19/21

* - ORELAP certified analyte

Cannabinoids	% weight	mg/g	LOQ (%)	Cannabinoids Profile
Total THC ((THCA*0.877)+d9)	73.66	736.6	0.07	
Total CBD ((CBDA*0.877)+CBD)	0.09	0.9	0.07	
d9-THC (d9-Tetrahydrocannabinol)*	46.27	462.7	0.07	
d8-THC (d8-Tetrahydrocannabinol)*	< LOQ	< LOQ	0.10	
THCA (d9-Tetrahydrocannabinolic Acid)*	31.23	312.3	0.15	
CBD (Cannabidiol)*	< LOQ	< LOQ	0.07	
CBDA (Cannabidiolic Acid)*	< LOQ	< LOQ	0.15	
CBN (Cannabinol)*	0.15	1.5	0.07	
CBG (Cannabigerol)*	0.60	6	0.10	
CBGA (Cannabigerolic Acid)	0.64	6.4	0.10	
CBDV (Cannabidivarin)*	< LOQ	< LOQ	0.10	
CBDVA (Cannabidivarinic Acid)	< LOQ	< LOQ	0.10	
CBC (Cannabichromene)*	0.26	2.6	0.10	
THCV (Tetrahydrocannabivarin)	< LOQ	< LOQ	0.10	
Total Cannabinoids	79.44	794.4	0.07	

<LOQ - Results below the Limit of Quantitation - Compound not detected

Sample Name: **Cherry Noir CRJ (Indigo-965)**

Sample Metrc ID: 1A4010300003909000014197

	Primary Result %	Duplicate Result %	Average %	% RPD	Pass/Fail (<15%RPD)
Total THC ((THCA*0.877)+d9)	73.48	73.66	73.57	0.245	PASS
Total CBD ((CBDA*0.877)+CBD)	0.09	0.09	0.09	NA	PASS


 Breeanna Hamilton For Brian Weigel
 Lab Director

These results relate only to the sample included on this report. The report may not be reproduced except in full, without the written permission of SC Laboratories. Samples tested in accordance with Oregon Administrative Rules, TNI 2009 Standard and SC Laboratories quality assurance plan unless otherwise noted.

Sample Name: Cherry Noir CRJ (Indigo-965) Primal	License: 100096CBB6
Tested for: Willamette Valley Alchemy Compliance Extract	Date Sampled: 03/16/21 00:00
	Date Accepted: 03/16/21
Laboratory ID: 21C0131-05	Sample Metric ID: 1A4010300003909000014197
Matrix: Extracts and Concentrates	Batch RFID: 1A4010300003909000014146
Lot # NA	Batch Size: 487 (g)

Terpene Analysis

Date Extracted: 03/19/21

Analysis Method: Terpenes by GC/FID

Date Analyzed: 03/19/21

Analyte	Result (%)	LOQ	Analyte	Result	LOQ
alpha Pinene	1.455	0.093	beta Myrcene	1.652	0.093
alpha Phellandrene	< LOQ	0.093	3-Carene	< LOQ	0.093
alpha Terpinene	< LOQ	0.093	Limonene	0.586	0.093
Terpinolene	< LOQ	0.093	Linalool	0.468	0.093
Fenchol	0.116	0.093	Borneol	< LOQ	0.093
Terpineol	0.158	0.093	Geraniol	< LOQ	0.093
alpha Humulene	0.215	0.093	beta Caryophyllene	0.538	0.093
(-)-Caryophyllene Oxide	< LOQ	0.093	(-)-alpha Bisabolol	0.276	0.093
Camphene	< LOQ	0.093	beta Pinene	0.148	0.093
Ocimene	< LOQ	0.093	Sabinene	< LOQ	0.093
Camphor	< LOQ	0.093	Isoborneol	< LOQ	0.093
Menthol	< LOQ	0.093	alpha Cedrene	< LOQ	0.093
Nerolidol	< LOQ	0.093	(+)-Pulegone	< LOQ	0.093
Eucalyptol	< LOQ	0.093	p-Cymene	< LOQ	0.093
(-)-Isopulegol	< LOQ	0.093	Geranyl Acetate	< LOQ	0.093
Guaiol	0.399	0.093	Valencene	< LOQ	0.093
Phytol	< LOQ	0.093	Citronellol	< LOQ	0.093
gamma Terpinene	< LOQ	0.093			
Total Terpenes				6.012 %	

<LOQ - Results below the Limit of Quantitation - Compound not detected

Terpene Analysis is not ORELAP Accredited.



Breeanna Hamilton For Brian Weigel
Lab Director

These results relate only to the sample included on this report. The report may not be reproduced except in full, without the written permission of SC Laboratories. Samples tested in accordance with Oregon Administrative Rules, TNI 2009 Standard and SC Laboratories quality assurance plan unless otherwise noted.

Sample Name: **Cherry Noir CRJ (Indigo-965) Primary**

License: **100096CBB6**

Tested for: **Willamette Valley Alchemy**

Date Sampled: **03/16/21 00:00**

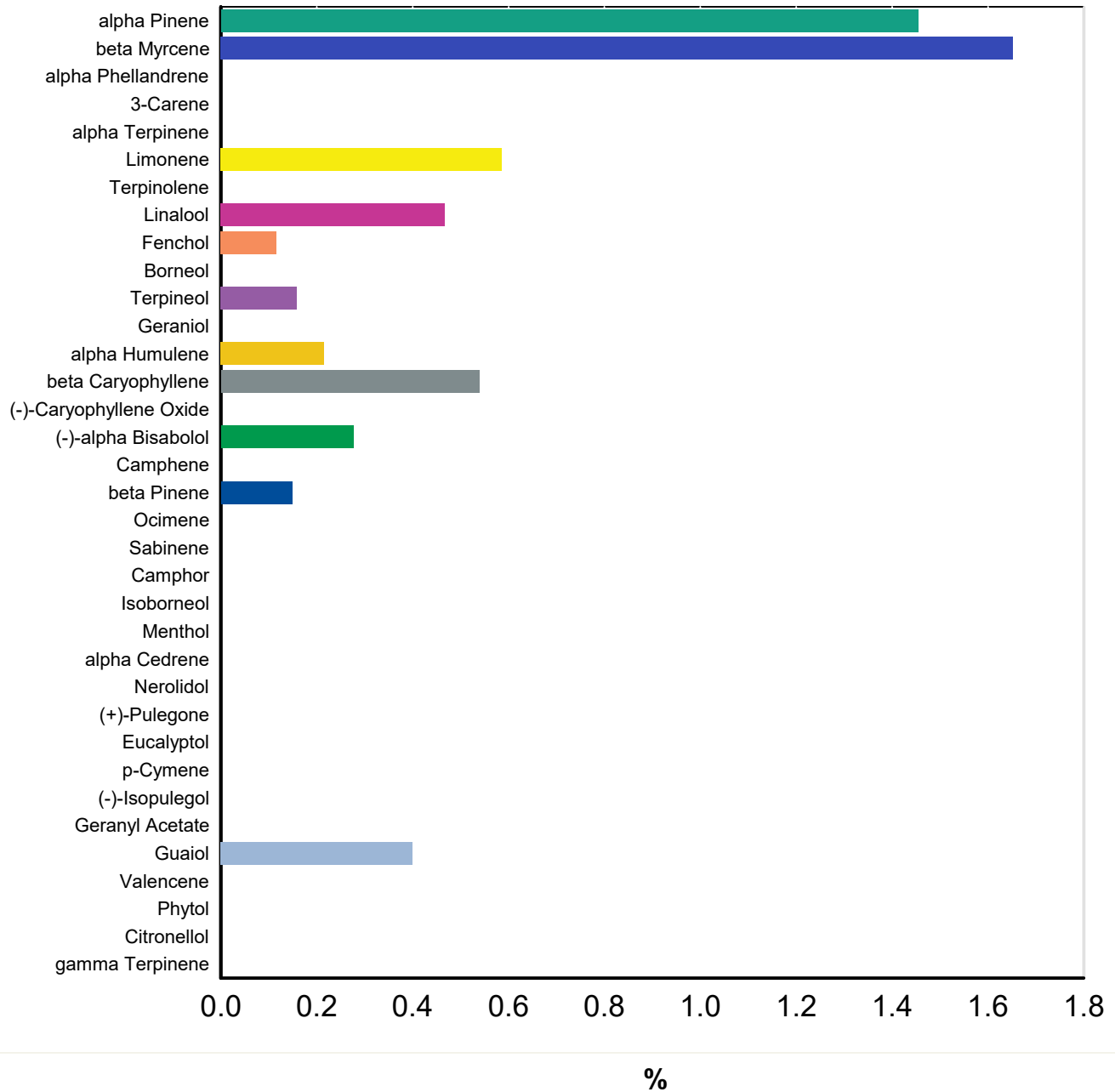
Compliance Extract

Date Accepted: **03/16/21 16:52**

Laboratory ID: **21C0131-05** Matrix: **Extracts and**

Client/Metric ID: **1A4010300003909000014197**

Terpene Profile



Breeanna Hamilton
 Breeanna Hamilton For Brian Weigel
 Lab Director

These results relate only to the sample included on this report. The report may not be reproduced except in full, without the written permission of SC Laboratories. Samples tested in accordance with Oregon Administrative Rules, TNI 2009 Standard and SC Laboratories quality assurance plan unless otherwise noted.

Sample Name: **Cherry Noir CRJ (Indigo-965) Primary** License: **100096CBB6**
 Tested for: **Willamette Valley Alchemy** Date Sampled: **03/16/21 00:00**
Compliance Extract Date Accepted: **03/16/21**

Laboratory ID: **21C0131-05** Sample Metrc ID: **1A4010300003909000014197**
 Matrix: **Extracts and Concentrates** Batch RFID: **1A4010300003909000014146**
 Lot # **NA** Batch Size: **487 (g)**

Pesticide Analysis in ppm

Date Extracted: 03/22/21 Analysis Method: AOAC 2007.01 & EN 15662
 Date Analyzed: 03/22/21 Results above the action levels are highlighted in red #.

Analyte	Result	Action Level	LOQ	Analyte	Result	Action Level	LOQ
Abamectin	< LOQ	0.5	0.235	Acephate	< LOQ	0.4	0.188
Acequinocyl	< LOQ	2	0.940	Acetamiprid	< LOQ	0.2	0.094
Aldicarb	< LOQ	0.4	0.188	Azoxystrobin	< LOQ	0.2	0.094
Bifenazate	< LOQ	0.2	0.094	Bifenthrin	< LOQ	0.2	0.094
Boscalid	< LOQ	0.4	0.188	Carbaryl	< LOQ	0.2	0.094
Carbofuran	< LOQ	0.2	0.094	Chlorantraniliprole	< LOQ	0.2	0.094
Chlorfenapyr	< LOQ	1	0.470	Chlorpyrifos	< LOQ	0.2	0.094
Clofentezine	< LOQ	0.2	0.094	Cyfluthrin	< LOQ	1	0.470
Cypermethrin	< LOQ	1	0.470	Daminozide	< LOQ	1	0.470
DDVP (Dichlorvos)	< LOQ	1	0.470	Diazinon	< LOQ	0.2	0.094
Dimethoate	< LOQ	0.2	0.094	Ethoprophos	< LOQ	0.2	0.094
Etofenprox	< LOQ	0.4	0.188	Etoxazole	< LOQ	0.2	0.094
Fenoxycarb	< LOQ	0.2	0.094	Fenpyroximate	< LOQ	0.4	0.188
Fipronil	< LOQ	0.4	0.188	Fonicamid	< LOQ	1	0.470
Fludioxonil	< LOQ	0.4	0.188	Hexythiazox	< LOQ	1	0.470
Imazalil	< LOQ	0.2	0.094	Imidacloprid	< LOQ	0.4	0.188
Kresoxim-methyl	< LOQ	0.4	0.188	Malathion	< LOQ	0.2	0.094
Metalaxyl	< LOQ	0.2	0.094	Methiocarb	< LOQ	0.2	0.094
Methomyl	< LOQ	0.4	0.188	Methyl parathion	< LOQ	0.2	0.094
MGK-264	< LOQ	0.2	0.094	Myclobutanil	< LOQ	0.2	0.094
Naled	< LOQ	0.5	0.235	Oxamyl	< LOQ	1	0.470
Paclobutrazol	< LOQ	0.4	0.188	Permethrins (total)	< LOQ	0.2	0.094
Phosmet	< LOQ	0.2	0.094	Piperonyl butoxide	< LOQ	2	0.470
Prallethrin	< LOQ	0.2	0.094	Propiconazole	< LOQ	0.4	0.188
Propoxur	< LOQ	0.2	0.094	Pyrethrins (total)	< LOQ	1	0.470
Pyridaben	< LOQ	0.2	0.094	Spinosad	< LOQ	0.2	0.094
Spiromesifen	< LOQ	0.2	0.094	Spirotetramat	< LOQ	0.2	0.094
Spiroxamine	< LOQ	0.4	0.188	Tebuconazole	< LOQ	0.4	0.188
Thiacloprid	< LOQ	0.2	0.094	Thiamethoxam	< LOQ	0.2	0.094
Trifloxystrobin	< LOQ	0.2	0.094				

<LOQ - Results below the Limit of Quantitation - Compound not detected


 Breeanna Hamilton For Brian Weigel
 Lab Director

These results relate only to the sample included on this report. The report may not be reproduced except in full, without the written permission of SC Laboratories. Samples tested in accordance with Oregon Administrative Rules, TNI 2009 Standard and SC Laboratories quality assurance plan unless otherwise noted.

Sample Name: **Cherry Noir CRJ (Indigo-965) Duplicate** License: **100096CBB6**
 Tested for: **Willamette Valley Alchemy** Date Sampled: **03/16/21 00:00**
Compliance Extract Date Accepted: **03/16/21**

Laboratory ID: **21C0131-06** Sample Metrc ID: **1A4010300003909000014197**
 Matrix: **Extracts and Concentrates** Batch RFID: **1A4010300003909000014146**
 Lot # **NA** Batch Size: **487 (g)**

Pesticide Analysis in ppm

Date Extracted: 03/22/21 Analysis Method: AOAC 2007.01 & EN 15662
 Date Analyzed: 03/22/21 Results above the action levels are highlighted in red #.

Analyte	Result	Action Level	LOQ	Analyte	Result	Action Level	LOQ
Abamectin	< LOQ	0.5	0.246	Acephate	< LOQ	0.4	0.197
Acequinocyl	< LOQ	2	0.984	Acetamiprid	< LOQ	0.2	0.098
Aldicarb	< LOQ	0.4	0.197	Azoxystrobin	< LOQ	0.2	0.098
Bifenazate	< LOQ	0.2	0.098	Bifenthrin	< LOQ	0.2	0.098
Boscalid	< LOQ	0.4	0.197	Carbaryl	< LOQ	0.2	0.098
Carbofuran	< LOQ	0.2	0.098	Chlorantraniliprole	< LOQ	0.2	0.098
Chlorfenapyr	< LOQ	1	0.492	Chlorpyrifos	< LOQ	0.2	0.098
Clofentezine	< LOQ	0.2	0.098	Cyfluthrin	< LOQ	1	0.492
Cypermethrin	< LOQ	1	0.492	Daminozide	< LOQ	1	0.492
DDVP (Dichlorvos)	< LOQ	1	0.492	Diazinon	< LOQ	0.2	0.098
Dimethoate	< LOQ	0.2	0.098	Ethoprophos	< LOQ	0.2	0.098
Etofenprox	< LOQ	0.4	0.197	Etoxazole	< LOQ	0.2	0.098
Fenoxycarb	< LOQ	0.2	0.098	Fenpyroximate	< LOQ	0.4	0.197
Fipronil	< LOQ	0.4	0.197	Fonicamid	< LOQ	1	0.492
Fludioxonil	< LOQ	0.4	0.197	Hexythiazox	< LOQ	1	0.492
Imazalil	< LOQ	0.2	0.098	Imidacloprid	< LOQ	0.4	0.197
Kresoxim-methyl	< LOQ	0.4	0.197	Malathion	< LOQ	0.2	0.098
Metalaxyl	< LOQ	0.2	0.098	Methiocarb	< LOQ	0.2	0.098
Methomyl	< LOQ	0.4	0.197	Methyl parathion	< LOQ	0.2	0.098
MGK-264	< LOQ	0.2	0.098	Myclobutanil	< LOQ	0.2	0.098
Naled	< LOQ	0.5	0.246	Oxamyl	< LOQ	1	0.492
Paclobutrazol	< LOQ	0.4	0.197	Permethrins (total)	< LOQ	0.2	0.098
Phosmet	< LOQ	0.2	0.098	Piperonyl butoxide	< LOQ	2	0.492
Prallethrin	< LOQ	0.2	0.098	Propiconazole	< LOQ	0.4	0.197
Propoxur	< LOQ	0.2	0.098	Pyrethrins (total)	< LOQ	1	0.492
Pyridaben	< LOQ	0.2	0.098	Spinosad	< LOQ	0.2	0.098
Spiromesifen	< LOQ	0.2	0.098	Spirotetramat	< LOQ	0.2	0.098
Spiroxamine	< LOQ	0.4	0.197	Tebuconazole	< LOQ	0.4	0.197
Thiacloprid	< LOQ	0.2	0.098	Thiamethoxam	< LOQ	0.2	0.098
Trifloxystrobin	< LOQ	0.2	0.098				

<LOQ - Results below the Limit of Quantitation - Compound not detected


 Breeanna Hamilton For Brian Weigel
 Lab Director

These results relate only to the sample included on this report. The report may not be reproduced except in full, without the written permission of SC Laboratories. Samples tested in accordance with Oregon Administrative Rules, TNI 2009 Standard and SC Laboratories quality assurance plan unless otherwise noted.

Sample Name: Cherry Noir CRJ (Indigo-965) Primary	License: 100096CBB6
Tested for: Willamette Valley Alchemy Compliance Extract	Date Sampled: 03/16/21 00:00 Date Accepted: 03/16/21
Laboratory ID: 21C0131-05	Sample Metric ID: 1A4010300003909000014197
Matrix: Extracts and Concentrates	Batch RFID: 1A4010300003909000014146
Lot # NA	Batch Size: 487 (g)

Residual Solvents

Solvent	Results in ug/g	Action Level	LOQ	Date Extracted: 03/19/21 Date Analyzed: 03/20/21 Analysis Method: USP 467
1,4-Dioxane	< LOQ	380	190	
2-Butanol	< LOQ	5000	2500	
2-Ethoxyethanol	< LOQ	160	79.9	
2-Propanol (IPA)	< LOQ	5000	2500	
Acetone	< LOQ	5000	2500	
Acetonitrile	< LOQ	400	205	
Benzene	< LOQ	2	0.999	
Butanes	< LOQ	5000	2500	
Cyclohexane	< LOQ	3880	1940	
Dichloromethane (methylene chloride)	< LOQ	600	300	
Ethyl acetate	< LOQ	5000	2500	
Ethyl ether	< LOQ	5000	2500	
Ethylbenzene	< LOQ	2170	1080	
Ethylene glycol	< LOQ	620	310	
Ethylene oxide	< LOQ	50	25.0	
Heptane	< LOQ	5000	2500	
Hexanes	< LOQ	290	145	
Isopropyl acetate	< LOQ	5000	2500	
Isopropylbenzene (cumene)	< LOQ	70	35.0	
Methanol	< LOQ	3000	1500	
Pentanes	< LOQ	5000	2500	
Propane	< LOQ	5000	2500	
Tetrahydrofuran	< LOQ	720	360	
Toluene	< LOQ	890	444	
Xylenes	< LOQ	2170	1080	

<LOQ - Results below the Limit of Quantitation - Compound not detected
 Results above the Action Level fail state testing requirements and will be highlighted **Red #**.


 Breeanna Hamilton For Brian Weigel
 Lab Director

These results relate only to the sample included on this report. The report may not be reproduced except in full, without the written permission of SC Laboratories. Samples tested in accordance with Oregon Administrative Rules, TNI 2009 Standard and SC Laboratories quality assurance plan unless otherwise noted.

Sample Name: Cherry Noir CRJ (Indigo-965) Duplicate	License: 100096CBB6
Tested for: Willamette Valley Alchemy Compliance Extract	Date Sampled: 03/16/21 00:00 Date Accepted: 03/16/21
Laboratory ID: 21C0131-06	Sample Metric ID: 1A4010300003909000014197
Matrix: Extracts and Concentrates	Batch RFID: 1A4010300003909000014146
Lot # NA	Batch Size: 487 (g)

Residual Solvents

Solvent	Results in ug/g	Action Level	LOQ
1,4-Dioxane	< LOQ	380	169
2-Butanol	< LOQ	5000	2230
2-Ethoxyethanol	< LOQ	160	71.3
2-Propanol (IPA)	< LOQ	5000	2230
Acetone	< LOQ	5000	2230
Acetonitrile	< LOQ	400	183
Benzene	< LOQ	2	0.892
Butanes	< LOQ	5000	2230
Cyclohexane	< LOQ	3880	1730
Dichloromethane (methylene chloride)	< LOQ	600	268
Ethyl acetate	< LOQ	5000	2230
Ethyl ether	< LOQ	5000	2230
Ethylbenzene	< LOQ	2170	968
Ethylene glycol	< LOQ	620	276
Ethylene oxide	< LOQ	50	22.3
Heptane	< LOQ	5000	2230
Hexanes	< LOQ	290	129
Isopropyl acetate	< LOQ	5000	2230
Isopropylbenzene (cumene)	< LOQ	70	31.2
Methanol	< LOQ	3000	1340
Pentanes	< LOQ	5000	2230
Propane	< LOQ	5000	2230
Tetrahydrofuran	< LOQ	720	321
Toluene	< LOQ	890	397
Xylenes	< LOQ	2170	968

Date Extracted: 03/19/21
 Date Analyzed: 03/20/21
 Analysis Method: USP 467

<LOQ - Results below the Limit of Quantitation - Compound not detected
 Results above the Action Level fail state testing requirements and will be highlighted **Red #**.


 Breeanna Hamilton For Brian Weigel
 Lab Director

These results relate only to the sample included on this report. The report may not be reproduced except in full, without the written permission of SC Laboratories. Samples tested in accordance with Oregon Administrative Rules, TNI 2009 Standard and SC Laboratories quality assurance plan unless otherwise noted.

Case Narrative

Residual Solvent - Isopropylbenzene was above normally accepted recovery criteria in the Matrix Spike and Matrix Spike Duplicate due to pinene coelution. Analyte was below the reporting limit in all client samples.

Pesticides - Daminozide recovered above the upper acceptance limit in the Blank Spike. Daminozide and Ethoprophos recovered above the upper acceptance limit in the Matrix Spike and/or Matrix Spike Duplicate. Analytes were below the reporting limit in all client samples.

**Quality Control
Potency**

Batch: B210822 - Potency/Terpenes

Blank(B210822-BLK1)			Extracted - 03/19/21 8:43 Analyzed - 03/19/21 19:39					
Analyte	Result	Units	Spike Level	Source Result	%REC	%REC Limits	RPD	RPD Limit
d9-THC (d9-Tetrahydrocannabinol)	< LOQ	%						
d8-THC (d8-Tetrahydrocannabinol)	< LOQ	%						
THCA (d9-Tetrahydrocannabinolic Acid)	< LOQ	%						
CBD (Cannabidiol)	< LOQ	%						
CBDA (Cannabidiolic Acid)	< LOQ	%						
CBN (Cannabinol)	< LOQ	%						
CBG (Cannabigerol)	< LOQ	%						
CBGA (Cannabigerolic Acid)	< LOQ	%						
CBDV (Cannabidivarin)	< LOQ	%						
CBDVA (Cannabidivarinic Acid)	< LOQ	%						
CBC (Cannabichromene)	< LOQ	%						
THCV (Tetrahydrocannabivarin)	< LOQ	%						

Duplicate(B210822-DUP1)			Extracted - 03/19/21 8:43 Analyzed - 03/19/21 19:48					
Analyte	Result	Units	Spike Level	Source Result	%REC	%REC Limits	RPD	RPD Limit
d9-THC (d9-Tetrahydrocannabinol)	1.53	%		1.62			5.81	20
d8-THC (d8-Tetrahydrocannabinol)	< LOQ	%		< LOQ				20
THCA (d9-Tetrahydrocannabinolic Acid)	80.43	%		80.41			0.0199	20
CBD (Cannabidiol)	< LOQ	%		< LOQ				20
CBDA (Cannabidiolic Acid)	0.17	%		0.17			1.45	20
CBN (Cannabinol)	< LOQ	%		< LOQ				20
CBG (Cannabigerol)	0.25	%		0.25			0.210	20
CBGA (Cannabigerolic Acid)	0.98	%		1.00			1.76	20
CBDV (Cannabidivarin)	< LOQ	%		< LOQ				20
CBDVA (Cannabidivarinic Acid)	< LOQ	%		< LOQ				20


Breeanna Hamilton For Brian Weigel
Lab Director

These results relate only to the sample included on this report. The report may not be reproduced except in full, without the written permission of SC Laboratories. Samples tested in accordance with Oregon Administrative Rules, TNI 2009 Standard and SC Laboratories quality assurance plan unless otherwise noted.

Quality Control Potency (Continued)

Batch: B210822 - Potency/Terpenes (Continued)

Duplicate(B210822-DUP1)			Extracted - 03/19/21 8:43 Analyzed - 03/19/21 19:48					
Analyte	Result	Units	Spike Level	Source Result	%REC	%REC Limits	RPD	RPD Limit

CBC (Cannabichromene)	< LOQ	%		< LOQ				20
THCV (Tetrahydrocannabivarin)	< LOQ	%		< LOQ				20

LCS(B210822-BS1)			Extracted - 03/19/21 8:43 Analyzed - 03/19/21 19:30					
Analyte	Result	Units	Spike Level	Source Result	%REC	%REC Limits	RPD	RPD Limit

d9-THC (d9-Tetrahydrocannabinol)	0.20	%	0.200		102	80-120		
CBD (Cannabidiol)	0.21	%	0.200		106	80-120		
CBDA (Cannabidiolic Acid)	0.19	%	0.200		94.2	80-120		
CBN (Cannabinol)	0.20	%	0.200		99.0	80-120		


 Breeanna Hamilton For Brian Weigel
 Lab Director

These results relate only to the sample included on this report. The report may not be reproduced except in full, without the written permission of SC Laboratories. Samples tested in accordance with Oregon Administrative Rules, TNI 2009 Standard and SC Laboratories quality assurance plan unless otherwise noted.

Quality Control Pesticide Analysis

Batch: B210821 - Pesticide Prep

Analyte	Result	Units	Spike Level	Source Result	%REC	%REC Limits	RPD	RPD Limit
Blank(B210821-BLK1)			Extracted - 03/22/21 8:45 Analyzed - 03/22/21 17:04					
Abamectin	< LOQ	ppm						
Acephate	< LOQ	ppm						
Acequinocyl	< LOQ	ppm						
Acetamiprid	< LOQ	ppm						
Aldicarb	< LOQ	ppm						
Azoxystrobin	< LOQ	ppm						
Bifenazate	< LOQ	ppm						
Bifenthrin	< LOQ	ppm						
Boscalid	< LOQ	ppm						
Carbaryl	< LOQ	ppm						
Carbofuran	< LOQ	ppm						
Chlorantraniliprole	< LOQ	ppm						
Chlorfenapyr	< LOQ	ppm						
Chlorpyrifos	< LOQ	ppm						
Clofentezine	< LOQ	ppm						
Cyfluthrin	< LOQ	ppm						
Cypermethrin	< LOQ	ppm						
Daminozide	< LOQ	ppm						
DDVP (Dichlorvos)	< LOQ	ppm						
Diazinon	< LOQ	ppm						
Dimethoate	< LOQ	ppm						
Ethoprophos	< LOQ	ppm						
Etofenprox	< LOQ	ppm						
Etoxazole	< LOQ	ppm						
Fenoxycarb	< LOQ	ppm						
Fenpyroximate	< LOQ	ppm						
Fipronil	< LOQ	ppm						
Fonicamid	< LOQ	ppm						
Fludioxonil	< LOQ	ppm						
Hexythiazox	< LOQ	ppm						
Imazalil	< LOQ	ppm						
Imidacloprid	< LOQ	ppm						
Kresoxim-methyl	< LOQ	ppm						
Malathion	< LOQ	ppm						
Metalaxyl	< LOQ	ppm						


Breeanna Hamilton For Brian Weigel
Lab Director

These results relate only to the sample included on this report. The report may not be reproduced except in full, without the written permission of SC Laboratories. Samples tested in accordance with Oregon Administrative Rules, TNI 2009 Standard and SC Laboratories quality assurance plan unless otherwise noted.

Quality Control

Pesticide Analysis (Continued)

Batch: B210821 - Pesticide Prep (Continued)

Blank(B210821-BLK1)			Extracted - 03/22/21 8:45 Analyzed - 03/22/21 17:04					
Analyte	Result	Units	Spike Level	Source Result	%REC	%REC Limits	RPD	RPD Limit
Methiocarb	< LOQ	ppm						
Methomyl	< LOQ	ppm						
Methyl parathion	< LOQ	ppm						
MGK-264	< LOQ	ppm						
Myclobutanil	< LOQ	ppm						
Naled	< LOQ	ppm						
Oxamyl	< LOQ	ppm						
Paclbutrazol	< LOQ	ppm						
Permethrins (total)	< LOQ	ppm						
Phosmet	< LOQ	ppm						
Piperonyl butoxide	< LOQ	ppm						
Prallethrin	< LOQ	ppm						
Propiconazole	< LOQ	ppm						
Propoxur	< LOQ	ppm						
Pyrethrins (total)	< LOQ	ppm						
Pyridaben	< LOQ	ppm						
Spinosad	< LOQ	ppm						
Spiromesifen	< LOQ	ppm						
Spirotetramat	< LOQ	ppm						
Spiroxamine	< LOQ	ppm						
Tebuconazole	< LOQ	ppm						
Thiacloprid	< LOQ	ppm						
Thiamethoxam	< LOQ	ppm						
Trifloxystrobin	< LOQ	ppm						

LCS(B210821-BS1)			Extracted - 03/22/21 8:45 Analyzed - 03/22/21 17:20					
Analyte	Result	Units	Spike Level	Source Result	%REC	%REC Limits	RPD	RPD Limit
Abamectin	0.66	ppm	0.980		67.4	15-180		
Acephate	0.92	ppm	1.00		91.7	51-141		
Acequinocyl	0.51	ppm	1.00		50.8	16.9-111		
Acetamiprid	1.11	ppm	1.00		111	50-150		
Aldicarb	1.05	ppm	1.00		105	49-146		
Azoxystrobin	0.95	ppm	1.00		94.7	52-136		
Bifenazate	0.94	ppm	1.00		94.2	41-133		
Bifenthrin	0.73	ppm	1.00		73.2	22-130		


Breeanna Hamilton For Brian Weigel
Lab Director

These results relate only to the sample included on this report. The report may not be reproduced except in full, without the written permission of SC Laboratories. Samples tested in accordance with Oregon Administrative Rules, TNI 2009 Standard and SC Laboratories quality assurance plan unless otherwise noted.

Quality Control Pesticide Analysis (Continued)

Batch: B210821 - Pesticide Prep (Continued)

LCS(B210821-BS1)		Extracted - 03/22/21 8:45 Analyzed - 03/22/21 17:20						
Analyte	Result	Units	Spike Level	Source Result	%REC	%REC Limits	RPD	RPD Limit
Boscalid	0.96	ppm	1.00		96.0	29-144		
Carbaryl	0.91	ppm	1.00		90.9	61-127		
Carbofuran	0.92	ppm	1.00		92.3	62-136		
Chlorantraniliprole	0.84	ppm	1.00		83.8	41-150		
Chlorfenapyr	0.81	ppm	1.00		80.8	40-160		
Chlorpyrifos	0.83	ppm	1.00		83.0	29-124		
Clofentezine	0.93	ppm	1.00		92.6	40-127		
Cyfluthrin	0.97	ppm	1.00		96.6	55-165		
Cypermethrin	0.93	ppm	1.00		93.1	21-144		
Daminozide	1.70	ppm	1.00		170	15-145		
DDVP (Dichlorvos)	1.05	ppm	1.00		105	55-150		
Diazinon	0.97	ppm	1.00		97.4	43-127		
Dimethoate	0.89	ppm	1.00		88.6	62-136		
Ethoprophos	0.88	ppm	1.00		88.0	45-142		
Etofenprox	0.84	ppm	1.00		83.8	24-113		
Etoxazole	0.88	ppm	1.00		87.7	34-121		
Fenoxycarb	0.92	ppm	1.00		91.6	22-150		
Fenpyroximate	0.82	ppm	1.00		82.1	34-144		
Fipronil	0.96	ppm	1.00		95.6	25-149		
Flonicamid	1.22	ppm	1.00		122	53-144		
Fludioxonil	0.83	ppm	1.00		83.1	29-132		
Hexythiazox	0.92	ppm	1.00		92.4	22-111		
Imazalil	0.93	ppm	1.00		92.9	48-125		
Imidacloprid	1.16	ppm	1.00		116	41-150		
Kresoxim-methyl	0.92	ppm	1.00		92.1	43-140		
Malathion	0.88	ppm	1.00		87.7	25-148		
Metalaxyl	1.03	ppm	1.00		103	50-136		
Methiocarb	0.87	ppm	1.00		87.4	56-132		
Methomyl	0.79	ppm	1.00		79.2	40-150		
Methyl parathion	0.99	ppm	1.00		98.6	35-160		
MGK-264	0.55	ppm	0.630		87.3	32-134		
Myclobutanil	1.11	ppm	1.00		111	43-141		
Naled	1.12	ppm	1.00		112	15-136		
Oxamyl	0.89	ppm	1.00		88.7	56-133		
Paclobutrazol	0.90	ppm	1.00		89.8	34-143		


 Breeanna Hamilton For Brian Weigel
 Lab Director

These results relate only to the sample included on this report. The report may not be reproduced except in full, without the written permission of SC Laboratories. Samples tested in accordance with Oregon Administrative Rules, TNI 2009 Standard and SC Laboratories quality assurance plan unless otherwise noted.

Quality Control

Pesticide Analysis (Continued)

Batch: B210821 - Pesticide Prep (Continued)

LCS(B210821-BS1)		Extracted - 03/22/21 8:45 Analyzed - 03/22/21 17:20						
Analyte	Result	Units	Spike Level	Source Result	%REC	%REC Limits	RPD	RPD Limit
Permethrins (total)	0.86	ppm	1.00		86.0	31-113		
Phosmet	1.01	ppm	1.00		101	53-124		
Piperonyl butoxide	0.87	ppm	1.00		87.0	39-128		
Prallethrin	0.97	ppm	1.00		97.1	43-140		
Propiconazole	1.04	ppm	1.00		104	47-124		
Propoxur	0.87	ppm	1.00		87.3	63-135		
Pyrethrins (total)	0.53	ppm	0.630		84.7	19-144		
Pyridaben	0.84	ppm	1.00		83.7	31-122		
Spinosad	0.71	ppm	0.820		86.9	24-147		
Spiromesifen	0.99	ppm	1.00		98.8	49-133		
Spirotetramat	0.96	ppm	1.00		95.8	29-150		
Spiroxamine	1.00	ppm	1.00		100	15-122		
Tebuconazole	1.03	ppm	1.00		103	40-133		
Thiacloprid	1.08	ppm	1.00		108	60-143		
Thiamethoxam	1.00	ppm	1.00		100	42-146		
Trifloxystrobin	0.92	ppm	1.00		91.9	41-148		

Matrix Spike(B210821-MS1)		Extracted - 03/22/21 8:45 Analyzed - 03/22/21 17:36						
Analyte	Result	Units	Spike Level	Source Result	%REC	%REC Limits	RPD	RPD Limit
Abamectin	1.44	ppm	0.945	< LOQ	152	55-190		
Acephate	0.87	ppm	0.965	< LOQ	90.1	48-131		
Acequinocyl	0.33	ppm	0.965	< LOQ	33.7	15-119		
Acetamiprid	0.99	ppm	0.965	< LOQ	103	50-145		
Aldicarb	0.86	ppm	0.965	< LOQ	89.1	53-133		
Azoxystrobin	0.86	ppm	0.965	< LOQ	88.7	35-147		
Bifenazate	0.84	ppm	0.965	< LOQ	86.8	43-143		
Bifenthrin	0.35	ppm	0.965	< LOQ	36.7	16-107		
Boscalid	0.80	ppm	0.965	< LOQ	82.9	42-140		
Carbaryl	0.87	ppm	0.965	< LOQ	90.4	71-113		
Carbofuran	0.86	ppm	0.965	< LOQ	89.4	73-118		
Chlorantraniliprole	0.75	ppm	0.965	< LOQ	77.4	45-136		
Chlorfenapyr	0.47	ppm	0.965	< LOQ	48.4	40-190		
Chlorpyrifos	0.88	ppm	0.965	< LOQ	91.4	24-125		
Clofentezine	0.73	ppm	0.965	< LOQ	76.2	38-118		
Cyfluthrin	1.13	ppm	0.965	< LOQ	117	35-170		


Breeanna Hamilton For Brian Weigel
Lab Director

These results relate only to the sample included on this report. The report may not be reproduced except in full, without the written permission of SC Laboratories. Samples tested in accordance with Oregon Administrative Rules, TNI 2009 Standard and SC Laboratories quality assurance plan unless otherwise noted.

Quality Control

Pesticide Analysis (Continued)

Batch: B210821 - Pesticide Prep (Continued)

Matrix Spike(B210821-MS1)			Extracted - 03/22/21 8:45 Analyzed - 03/22/21 17:36					
Analyte	Result	Units	Spike Level	Source Result	%REC	%REC Limits	RPD	RPD Limit
Cypermethrin	0.87	ppm	0.965	< LOQ	90.3	38-150		
Daminozide	2.28	ppm	0.965	< LOQ	236	16-160		
DDVP (Dichlorvos)	0.93	ppm	0.965	< LOQ	96.2	64-124		
Diazinon	0.85	ppm	0.965	< LOQ	88.4	50-123		
Dimethoate	0.83	ppm	0.965	< LOQ	86.1	69-116		
Ethoprophos	1.33	ppm	0.965	< LOQ	138	39-146		
Etofenprox	0.51	ppm	0.965	< LOQ	52.4	31-117		
Etoxazole	0.79	ppm	0.965	< LOQ	81.5	35-136		
Fenoxycarb	0.77	ppm	0.965	< LOQ	80.3	23-150		
Fenpyroximate	1.12	ppm	0.965	< LOQ	116	30-143		
Fipronil	0.81	ppm	0.965	< LOQ	84.0	15-150		
Flonicamid	1.14	ppm	0.965	< LOQ	118	50-131		
Fludioxonil	0.84	ppm	0.965	< LOQ	87.0	44-150		
Hexythiazox	0.95	ppm	0.965	< LOQ	98.6	34-144		
Imazalil	0.60	ppm	0.965	< LOQ	62.5	54-124		
Imidacloprid	1.11	ppm	0.965	< LOQ	115	39-150		
Kresoxim-methyl	0.86	ppm	0.965	< LOQ	89.6	46-134		
Malathion	0.83	ppm	0.965	< LOQ	86.1	26-148		
Metalaxyl	0.96	ppm	0.965	< LOQ	99.5	60-127		
Methiocarb	0.79	ppm	0.965	< LOQ	81.7	50-131		
Methomyl	0.76	ppm	0.965	< LOQ	79.0	47-135		
Methyl parathion	0.84	ppm	0.965	< LOQ	86.7	33.5-156		
MGK-264	0.40	ppm	0.608	< LOQ	65.1	20-130		
Myclobutanil	0.91	ppm	0.965	< LOQ	94.6	43-134		
Naled	1.03	ppm	0.965	< LOQ	107	38-140		
Oxamyl	0.84	ppm	0.965	< LOQ	87.6	48-127		
Paclobutrazol	0.72	ppm	0.965	< LOQ	74.5	30-136		
Permethrins (total)	0.65	ppm	0.965	< LOQ	67.3	20-120		
Phosmet	0.92	ppm	0.965	< LOQ	95.3	51-134		
Piperonyl butoxide	0.67	ppm	0.965	< LOQ	69.8	36-134		
Prallethrin	0.75	ppm	0.965	< LOQ	78.0	23-149		
Propiconazole	0.66	ppm	0.965	< LOQ	68.3	45-133		
Propoxur	0.84	ppm	0.965	< LOQ	87.3	59-130		
Pyrethrins (total)	0.54	ppm	0.608	< LOQ	88.6	15-146		
Pyridaben	0.65	ppm	0.965	< LOQ	67.7	15-150		


Breeanna Hamilton For Brian Weigel
Lab Director

These results relate only to the sample included on this report. The report may not be reproduced except in full, without the written permission of SC Laboratories. Samples tested in accordance with Oregon Administrative Rules, TNI 2009 Standard and SC Laboratories quality assurance plan unless otherwise noted.

Quality Control

Pesticide Analysis (Continued)

Batch: B210821 - Pesticide Prep (Continued)

Matrix Spike(B210821-MS1)			Extracted - 03/22/21 8:45 Analyzed - 03/22/21 17:36					
Analyte	Result	Units	Spike Level	Source Result	%REC	%REC Limits	RPD	RPD Limit
Spinosad	0.44	ppm	0.791	< LOQ	55.2	23-150		
Spiromesifen	0.84	ppm	0.965	< LOQ	86.9	27-127		
Spirotetramat	1.03	ppm	0.965	< LOQ	106	33-150		
Spiroxamine	0.73	ppm	0.965	< LOQ	75.6	54-134		
Tebuconazole	0.86	ppm	0.965	< LOQ	88.7	22-126		
Thiacloprid	0.96	ppm	0.965	< LOQ	99.2	53-138		
Thiamethoxam	0.95	ppm	0.965	< LOQ	99.0	40-134		
Trifloxystrobin	0.93	ppm	0.965	< LOQ	95.9	25-140		

Matrix Spike Dup(B210821-MSD1)			Extracted - 03/22/21 8:45 Analyzed - 03/22/21					
Analyte	Result	Units	Spike Level	Source Result	%REC	%REC Limits	RPD	RPD Limit
Abamectin	1.71	ppm	0.953	< LOQ	179	55-190	16.2	40
Acephate	0.86	ppm	0.973	< LOQ	88.8	48-131	1.48	26
Acequinocyl	0.39	ppm	0.973	< LOQ	40.3	15-119	17.6	50
Acetamiprid	1.01	ppm	0.973	< LOQ	104	50-145	1.64	30
Aldicarb	0.94	ppm	0.973	< LOQ	97.2	53-133	8.60	30
Azoxystrobin	0.92	ppm	0.973	< LOQ	94.4	35-147	6.25	29
Bifenazate	0.92	ppm	0.973	< LOQ	94.1	43-143	8.12	30
Bifenthrin	0.40	ppm	0.973	< LOQ	40.8	16-107	10.5	29
Boscalid	0.83	ppm	0.973	< LOQ	85.5	42-140	3.13	30
Carbaryl	0.92	ppm	0.973	< LOQ	94.7	71-113	4.70	20
Carbofuran	0.93	ppm	0.973	< LOQ	95.8	73-118	6.90	20
Chlorantraniliprole	0.80	ppm	0.973	< LOQ	82.5	45-136	6.47	30
Chlorfenapyr	0.53	ppm	0.973	< LOQ	54.3	40-190	11.4	50
Chlorpyrifos	1.00	ppm	0.973	< LOQ	103	24-125	11.8	29
Clofentezine	0.77	ppm	0.973	< LOQ	79.4	38-118	4.19	26
Cyfluthrin	1.31	ppm	0.973	< LOQ	135	35-170	13.9	50
Cypermethrin	0.91	ppm	0.973	< LOQ	93.2	38-150	3.16	30
Daminozide	2.00	ppm	0.973	< LOQ	206	16-160	13.8	26
DDVP (Dichlorvos)	0.93	ppm	0.973	< LOQ	95.9	64-124	0.305	27
Diazinon	0.97	ppm	0.973	< LOQ	99.7	50-123	12.0	20
Dimethoate	0.81	ppm	0.973	< LOQ	83.7	69-116	2.75	20
Ethoprophos	1.44	ppm	0.973	< LOQ	148	39-146	6.84	30
Etofenprox	0.57	ppm	0.973	< LOQ	58.4	31-117	10.7	27
Etoxazole	0.82	ppm	0.973	< LOQ	84.8	35-136	3.90	30


Breeanna Hamilton For Brian Weigel
Lab Director

These results relate only to the sample included on this report. The report may not be reproduced except in full, without the written permission of SC Laboratories. Samples tested in accordance with Oregon Administrative Rules, TNI 2009 Standard and SC Laboratories quality assurance plan unless otherwise noted.

Quality Control

Pesticide Analysis (Continued)

Batch: B210821 - Pesticide Prep (Continued)

Matrix Spike Dup(B210821-MSD1)			Extracted - 03/22/21 8:45 Analyzed - 03/22/21					
Analyte	Result	Units	Spike Level	Source Result	%REC	%REC Limits	RPD	RPD Limit
Fenoxycarb	0.86	ppm	0.973	< LOQ	88.0	23-150	9.20	40
Fenpyroximate	1.22	ppm	0.973	< LOQ	125	30-143	7.94	26
Fipronil	0.86	ppm	0.973	< LOQ	88.8	15-150	5.60	30
Flonicamid	1.09	ppm	0.973	< LOQ	112	50-131	5.31	26
Fludioxonil	0.87	ppm	0.973	< LOQ	89.8	44-150	3.13	30
Hexythiazox	1.04	ppm	0.973	< LOQ	107	34-144	8.27	28
Imazalil	0.70	ppm	0.973	< LOQ	71.9	54-124	14.0	24
Imidacloprid	1.04	ppm	0.973	< LOQ	107	39-150	6.89	30
Kresoxim-methyl	0.89	ppm	0.973	< LOQ	91.8	46-134	2.52	20
Malathion	0.86	ppm	0.973	< LOQ	88.4	26-148	2.64	50
Metalaxyl	1.02	ppm	0.973	< LOQ	105	60-127	5.64	30
Methiocarb	0.87	ppm	0.973	< LOQ	89.2	50-131	8.71	30
Methomyl	0.81	ppm	0.973	< LOQ	82.8	47-135	4.72	20
Methyl parathion	0.84	ppm	0.973	< LOQ	86.3	33.5-156	0.413	50
MGK-264	0.43	ppm	0.613	< LOQ	70.7	20-130	8.28	30
Myclobutanil	0.94	ppm	0.973	< LOQ	97.1	43-134	2.67	30
Naled	1.12	ppm	0.973	< LOQ	115	38-140	7.47	30
Oxamyl	0.85	ppm	0.973	< LOQ	87.5	48-127	0.103	28
Paclobutrazol	0.73	ppm	0.973	< LOQ	75.1	30-136	0.829	30
Permethrins (total)	0.71	ppm	0.973	< LOQ	72.6	20-120	7.63	28
Phosmet	0.95	ppm	0.973	< LOQ	97.3	51-134	2.04	30
Piperonyl butoxide	0.71	ppm	0.973	< LOQ	72.9	36-134	4.35	30
Prallethrin	0.88	ppm	0.973	< LOQ	90.3	23-149	14.6	30
Propiconazole	0.71	ppm	0.973	< LOQ	73.3	45-133	7.08	30
Propoxur	0.92	ppm	0.973	< LOQ	94.2	59-130	7.68	29
Pyrethrins (total)	0.58	ppm	0.613	< LOQ	95.4	15-146	7.40	28
Pyridaben	0.71	ppm	0.973	< LOQ	73.1	15-150	7.65	29
Spinosad	0.50	ppm	0.797	< LOQ	62.8	23-150	12.9	30
Spiromesifen	0.90	ppm	0.973	< LOQ	92.3	27-127	6.11	28
Spirotetramat	1.09	ppm	0.973	< LOQ	112	33-150	5.05	30
Spiroxamine	0.74	ppm	0.973	< LOQ	76.0	54-134	0.513	30
Tebuconazole	0.97	ppm	0.973	< LOQ	99.8	22-126	11.8	21
Thiacloprid	0.93	ppm	0.973	< LOQ	96.0	53-138	3.33	30
Thiamethoxam	0.95	ppm	0.973	< LOQ	97.4	40-134	1.64	28
Trifloxystrobin	0.87	ppm	0.973	< LOQ	89.3	25-140	7.13	30


Breeanna Hamilton For Brian Weigel
Lab Director

These results relate only to the sample included on this report. The report may not be reproduced except in full, without the written permission of SC Laboratories. Samples tested in accordance with Oregon Administrative Rules, TNI 2009 Standard and SC Laboratories quality assurance plan unless otherwise noted.

Quality Control Solvent Analysis

Batch: B210820 - Residual Solvent Prep

Blank(B210820-BLK1)			Extracted - 03/19/21 8:40 Analyzed - 03/19/21 22:45					
Analyte	Result	Units	Spike Level	Source Result	%REC	%REC Limits	RPD	RPD Limit
1,4-Dioxane	< LOQ	ug/g						
2-Butanol	< LOQ	ug/g						
2-Ethoxyethanol	< LOQ	ug/g						
2-Propanol (IPA)	< LOQ	ug/g						
Acetone	< LOQ	ug/g						
Acetonitrile	< LOQ	ug/g						
Benzene	< LOQ	ug/g						
Butanes	< LOQ	ug/g						
Cyclohexane	< LOQ	ug/g						
Dichloromethane (methylene chloride)	< LOQ	ug/g						
Ethyl acetate	< LOQ	ug/g						
Ethyl ether	< LOQ	ug/g						
Ethylbenzene	< LOQ	ug/g						
Ethylene glycol	< LOQ	ug/g						
Ethylene oxide	< LOQ	ug/g						
Heptane	< LOQ	ug/g						
Hexanes	< LOQ	ug/g						
Isopropyl acetate	< LOQ	ug/g						
Isopropylbenzene (cumene)	< LOQ	ug/g						
Methanol	< LOQ	ug/g						
Pentanes	< LOQ	ug/g						
Propane	< LOQ	ug/g						
Tetrahydrofuran	< LOQ	ug/g						
Toluene	< LOQ	ug/g						
Xylenes	< LOQ	ug/g						

LCS(B210820-BS1)			Extracted - 03/19/21 8:40 Analyzed - 03/19/21 21:42					
Analyte	Result	Units	Spike Level	Source Result	%REC	%REC Limits	RPD	RPD Limit
1,4-Dioxane	601	ug/g	570		105	70-130		
2,2-Dimethylbutane	459	ug/g	435		106	70-130		
2,2-Dimethylpropane (neopentane)	3940	ug/g	3120		126	60-140		
2-Butanol	3650	ug/g	3500		104	70-130		
2-Ethoxyethanol	248	ug/g	240		104	60-140		
2-Methylbutane (isopentane)	3990	ug/g	3500		114	70-130		
2-Methylpentane/2,3-Dimethylbutane	912	ug/g	870		105	70-130		


Breeanna Hamilton For Brian Weigel
Lab Director

These results relate only to the sample included on this report. The report may not be reproduced except in full, without the written permission of SC Laboratories. Samples tested in accordance with Oregon Administrative Rules, TNI 2009 Standard and SC Laboratories quality assurance plan unless otherwise noted.

Quality Control Solvent Analysis (Continued)

Batch: B210820 - Residual Solvent Prep (Continued)

LCS(B210820-BS1)		Extracted - 03/19/21 8:40 Analyzed - 03/19/21 21:42						
Analyte	Result	Units	Spike Level	Source Result	%REC	%REC Limits	RPD	RPD Limit
2-Methylpropane (isobutane)	3890	ug/g	3120		124	60-140		
2-Propanol (IPA)	3780	ug/g	3500		108	70-130		
3-Methylpentane	460	ug/g	435		106	70-130		
Acetone	3800	ug/g	3500		109	70-130		
Acetonitrile	653	ug/g	615		106	70-130		
Benzene	3.09	ug/g	3.00		103	70-130		
Cyclohexane	6630	ug/g	5820		114	70-130		
Dichloromethane (methylene chloride)	922	ug/g	900		102	70-130		
Ethyl acetate	3840	ug/g	3500		110	70-130		
Ethyl ether	4150	ug/g	3500		118	70-130		
Ethylbenzene	3370	ug/g	3250		104	70-130		
Ethylene glycol	731	ug/g	930		78.6	60-140		
Ethylene oxide	405	ug/g	375		108	60-140		
Heptane	3850	ug/g	3500		110	70-130		
Isopropyl acetate	3890	ug/g	3500		111	70-130		
Isopropylbenzene (cumene)	101	ug/g	105		95.8	70-130		
m,p-Xylene	6870	ug/g	6510		105	60-140		
Methanol	2750	ug/g	2500		110	70-130		
n-Butane	4080	ug/g	3120		131	60-140		
n-Hexane	441	ug/g	435		101	70-130		
n-Pentane	3780	ug/g	3500		108	70-130		
Propane	1390	ug/g	1250		112	60-140		
Tetrahydrofuran	1200	ug/g	1080		111	70-130		
Toluene	1390	ug/g	1340		104	70-130		
o-Xylene	3270	ug/g	3250		100	70-130		

Matrix Spike(B210820-MS1)		Extracted - 03/19/21 8:40 Analyzed - 03/19/21 22:03						
Analyte	Result	Units	Spike Level	Source Result	%REC	%REC Limits	RPD	RPD Limit
1,4-Dioxane	547	ug/g	531	< LOQ	103	70-130		
2,2-Dimethylbutane	444	ug/g	406	< LOQ	110	70-130		
2,2-Dimethylpropane (neopentane)	3850	ug/g	2910	< LOQ	132	60-140		
2-Butanol	3400	ug/g	3260	< LOQ	104	70-130		
2-Ethoxyethanol	223	ug/g	224	< LOQ	99.5	60-140		
2-Methylbutane (isopentane)	3890	ug/g	3260	< LOQ	119	70-130		
2-Methylpentane/2,3-Dimethylbutane	873	ug/g	811	< LOQ	108	70-130		


Breeanna Hamilton For Brian Weigel
Lab Director

These results relate only to the sample included on this report. The report may not be reproduced except in full, without the written permission of SC Laboratories. Samples tested in accordance with Oregon Administrative Rules, TNI 2009 Standard and SC Laboratories quality assurance plan unless otherwise noted.

Quality Control Solvent Analysis (Continued)

Batch: B210820 - Residual Solvent Prep (Continued)

Matrix Spike(B210820-MS1)			Extracted - 03/19/21 8:40 Analyzed - 03/19/21 22:03					
Analyte	Result	Units	Spike Level	Source Result	%REC	%REC Limits	RPD	RPD Limit
2-Methylpropane (isobutane)	3760	ug/g	2910	< LOQ	129	60-140		
2-Propanol (IPA)	3560	ug/g	3260	< LOQ	109	70-130		
3-Methylpentane	441	ug/g	406	< LOQ	109	70-130		
Acetone	3550	ug/g	3260	< LOQ	109	70-130		
Acetonitrile	607	ug/g	573	< LOQ	106	70-130		
Benzene	2.65	ug/g	2.80	< LOQ	94.8	70-130		
Cyclohexane	6360	ug/g	5430	< LOQ	117	70-130		
Dichloromethane (methylene chloride)	880	ug/g	839	< LOQ	105	70-130		
Ethyl acetate	3560	ug/g	3260	< LOQ	109	70-130		
Ethyl ether	3960	ug/g	3260	< LOQ	121	70-130		
Ethylbenzene	3100	ug/g	3030	< LOQ	102	70-130		
Ethylene glycol	731	ug/g	867	< LOQ	84.2	60-140		
Ethylene oxide	379	ug/g	350	< LOQ	108	60-140		
Heptane	3660	ug/g	3260	< LOQ	112	70-130		
Isopropyl acetate	3580	ug/g	3260	< LOQ	110	70-130		
Isopropylbenzene (cumene)	581	ug/g	97.9	< LOQ	594	70-130		
m,p-Xylene	6330	ug/g	6070	< LOQ	104	60-140		
Methanol	2630	ug/g	2330	< LOQ	113	70-130		
n-Butane	3960	ug/g	2910	< LOQ	136	60-140		
n-Hexane	420	ug/g	406	< LOQ	104	70-130		
n-Pentane	3680	ug/g	3260	< LOQ	113	70-130		
Propane	1360	ug/g	1170	< LOQ	116	60-140		
Tetrahydrofuran	1090	ug/g	1010	< LOQ	108	70-130		
Toluene	1290	ug/g	1250	< LOQ	103	70-130		
o-Xylene	3040	ug/g	3030	< LOQ	100	70-130		

Matrix Spike Dup(B210820-MSD1)			Extracted - 03/19/21 8:40 Analyzed - 03/19/21					
Analyte	Result	Units	Spike Level	Source Result	%REC	%REC Limits	RPD	RPD Limit
1,4-Dioxane	566	ug/g	558	< LOQ	101	70-130	3.30	30
2,2-Dimethylbutane	455	ug/g	426	< LOQ	107	70-130	2.35	30
2,2-Dimethylpropane (neopentane)	4040	ug/g	3060	< LOQ	132	60-140	4.85	30
2-Butanol	3510	ug/g	3430	< LOQ	102	70-130	2.91	30
2-Ethoxyethanol	233	ug/g	235	< LOQ	99.2	60-140	4.57	30
2-Methylbutane (isopentane)	4020	ug/g	3430	< LOQ	117	70-130	3.26	30
2-Methylpentane/2,3-Dimethylbutane	906	ug/g	852	< LOQ	106	70-130	3.77	30


Breeanna Hamilton For Brian Weigel
Lab Director

These results relate only to the sample included on this report. The report may not be reproduced except in full, without the written permission of SC Laboratories. Samples tested in accordance with Oregon Administrative Rules, TNI 2009 Standard and SC Laboratories quality assurance plan unless otherwise noted.

Quality Control Solvent Analysis (Continued)

Batch: B210820 - Residual Solvent Prep (Continued)

Matrix Spike Dup(B210820-MSD1)			Extracted - 03/19/21 8:40 Analyzed - 03/19/21					
Analyte	Result	Units	Spike Level	Source Result	%REC	%REC Limits	RPD	RPD Limit
2-Methylpropane (isobutane)	3900	ug/g	3060	< LOQ	127	60-140	3.67	30
2-Propanol (IPA)	3690	ug/g	3430	< LOQ	108	70-130	3.52	30
3-Methylpentane	457	ug/g	426	< LOQ	107	70-130	3.48	30
Acetone	3680	ug/g	3430	< LOQ	108	70-130	3.66	30
Acetonitrile	625	ug/g	602	< LOQ	104	70-130	3.04	30
Benzene	3.02	ug/g	2.94	< LOQ	103	70-130	12.9	30
Cyclohexane	6530	ug/g	5700	< LOQ	115	70-130	2.71	30
Dichloromethane (methylene chloride)	900	ug/g	881	< LOQ	102	70-130	2.21	30
Ethyl acetate	3690	ug/g	3430	< LOQ	108	70-130	3.45	30
Ethyl ether	4040	ug/g	3430	< LOQ	118	70-130	1.99	30
Ethylbenzene	3300	ug/g	3180	< LOQ	104	70-130	5.99	30
Ethylene glycol	754	ug/g	911	< LOQ	82.8	60-140	3.11	30
Ethylene oxide	390	ug/g	367	< LOQ	106	60-140	2.81	30
Heptane	3790	ug/g	3430	< LOQ	110	70-130	3.27	30
Isopropyl acetate	3690	ug/g	3430	< LOQ	108	70-130	3.07	30
Isopropylbenzene (cumene)	591	ug/g	103	< LOQ	575	70-130	1.64	30
m,p-Xylene	6710	ug/g	6380	< LOQ	105	60-140	5.78	30
Methanol	2730	ug/g	2450	< LOQ	111	70-130	3.74	30
n-Butane	4120	ug/g	3060	< LOQ	135	60-140	3.88	30
n-Hexane	430	ug/g	426	< LOQ	101	70-130	2.42	30
n-Pentane	3740	ug/g	3430	< LOQ	109	70-130	1.87	30
Propane	1410	ug/g	1220	< LOQ	115	60-140	3.99	30
Tetrahydrofuran	1130	ug/g	1060	< LOQ	107	70-130	3.42	30
Toluene	1340	ug/g	1310	< LOQ	102	70-130	4.07	30
o-Xylene	3220	ug/g	3180	< LOQ	101	70-130	5.80	30


Breeanna Hamilton For Brian Weigel
Lab Director

These results relate only to the sample included on this report. The report may not be reproduced except in full, without the written permission of SC Laboratories. Samples tested in accordance with Oregon Administrative Rules, TNI 2009 Standard and SC Laboratories quality assurance plan unless otherwise noted.

Quality Control Terpene Analysis

Batch: B210823 - Potency/Terpenes

Blank(B210823-BLK1)			Extracted - 03/19/21 8:43 Analyzed - 03/19/21 17:07					
Analyte	Result	Units	Spike Level	Source Result	%REC	%REC Limits	RPD	RPD Limit
alpha Pinene	< LOQ	%						
beta Myrcene	< LOQ	%						
alpha Phellandrene	< LOQ	%						
3-Carene	< LOQ	%						
alpha Terpinene	< LOQ	%						
Limonene	< LOQ	%						
Terpinolene	< LOQ	%						
Linalool	< LOQ	%						
Fenchol	< LOQ	%						
Borneol	< LOQ	%						
Terpineol	< LOQ	%						
Geraniol	< LOQ	%						
alpha Humulene	< LOQ	%						
beta Caryophyllene	< LOQ	%						
(-)-Caryophyllene Oxide	< LOQ	%						
(-)-alpha Bisabolol	< LOQ	%						
Camphene	< LOQ	%						
beta Pinene	< LOQ	%						
Ocimene	< LOQ	%						
Sabinene	< LOQ	%						
Camphor	< LOQ	%						
Isoborneol	< LOQ	%						
Menthol	< LOQ	%						
alpha Cedrene	< LOQ	%						
Nerolidol	< LOQ	%						
(+)-Pulegone	< LOQ	%						
Eucalyptol	< LOQ	%						
p-Cymene	< LOQ	%						
(-)-Isopulegol	< LOQ	%						
Geranyl Acetate	< LOQ	%						
Guaiol	< LOQ	%						
Valencene	< LOQ	%						
Phytol	< LOQ	%						
Citronellol	< LOQ	%						
gamma Terpinene	< LOQ	%						


 Breeanna Hamilton For Brian Weigel
 Lab Director

These results relate only to the sample included on this report. The report may not be reproduced except in full, without the written permission of SC Laboratories. Samples tested in accordance with Oregon Administrative Rules, TNI 2009 Standard and SC Laboratories quality assurance plan unless otherwise noted.

Quality Control

Terpene Analysis (Continued)

Batch: B210823 - Potency/Terpenes (Continued)

Duplicate(B210823-DUP1)		Extracted - 03/19/21 8:43 Analyzed - 03/19/21 17:24						
Analyte	Result	Units	Spike Level	Source Result	%REC	%REC Limits	RPD	RPD Limit
alpha Ocimene	< LOQ	%		< LOQ				30
beta Ocimene	< LOQ	%		< LOQ				30
cis-Nerolidol	< LOQ	%		< LOQ				30
Phytol 1	< LOQ	%		< LOQ				30
Phytol 2	< LOQ	%		< LOQ				30
trans-Nerolidol	< LOQ	%		< LOQ				30
alpha Pinene	< LOQ	%		< LOQ				30
beta Myrcene	1.472	%		1.420			3.59	30
alpha Phellandrene	< LOQ	%		< LOQ				30
3-Carene	< LOQ	%		< LOQ				30
alpha Terpinene	< LOQ	%		< LOQ				30
Limonene	0.327	%		0.316			3.16	30
Terpinolene	< LOQ	%		< LOQ				30
Linalool	0.339	%		0.346			2.00	30
Fenchol	< LOQ	%		< LOQ				30
Borneol	< LOQ	%		< LOQ				30
Terpineol	< LOQ	%		< LOQ				30
Geraniol	< LOQ	%		< LOQ				30
alpha Humulene	0.545	%		0.573			5.00	30
beta Caryophyllene	1.500	%		1.508			0.502	30
(-)-Caryophyllene Oxide	< LOQ	%		< LOQ				30
(-)-alpha Bisabolol	0.557	%		0.543			2.56	30
Camphene	< LOQ	%		< LOQ				30
beta Pinene	< LOQ	%		< LOQ				30
Ocimene	< LOQ	%		< LOQ				30
Sabinene	< LOQ	%		< LOQ				30
Camphor	< LOQ	%		< LOQ				30
Isoborneol	< LOQ	%		< LOQ				30
Menthol	< LOQ	%		< LOQ				30
alpha Cedrene	< LOQ	%		< LOQ				30
Nerolidol	< LOQ	%		< LOQ				30
(+)-Pulegone	< LOQ	%		< LOQ				30
Eucalyptol	< LOQ	%		< LOQ				30
p-Cymene	< LOQ	%		< LOQ				30
(-)-Isopulegol	< LOQ	%		< LOQ				30


Breeanna Hamilton For Brian Weigel
Lab Director

These results relate only to the sample included on this report. The report may not be reproduced except in full, without the written permission of SC Laboratories. Samples tested in accordance with Oregon Administrative Rules, TNI 2009 Standard and SC Laboratories quality assurance plan unless otherwise noted.

Quality Control

Terpene Analysis (Continued)

Batch: B210823 - Potency/Terpenes (Continued)

Duplicate(B210823-DUP1)		Extracted - 03/19/21 8:43 Analyzed - 03/19/21 17:24						
Analyte	Result	Units	Spike Level	Source Result	%REC	%REC Limits	RPD	RPD Limit
Geranyl Acetate	< LOQ	%		< LOQ				30
Guaiol	< LOQ	%		< LOQ				30
Valencene	< LOQ	%		< LOQ				30
Phytol	< LOQ	%		< LOQ				30
Citronellol	< LOQ	%		< LOQ				30
gamma Terpinene	< LOQ	%		< LOQ				30


 Breeanna Hamilton For Brian Weigel
 Lab Director

These results relate only to the sample included on this report. The report may not be reproduced except in full, without the written permission of SC Laboratories. Samples tested in accordance with Oregon Administrative Rules, TNI 2009 Standard and SC Laboratories quality assurance plan unless otherwise noted.



**OREGON LIQUOR CONTROL COMMISSION
CANNABIS TRANSPORTATION MANIFEST**



21C0132

21C0131

21C0130

All sales transactions are to be completed prior to transportation of any CANNABIS. The receiving entity may reject product delivered, but amount delivered must be limited to amount agreed upon in prior sales transaction.

Manifest No.	0003105196	Date Created	3/16/2021 1:33 PM
Originating Entity	Willamette Valley Alchemy	For OLCC Use Only	
Originating License Number	030-1000096CBB6		
Address of Originating Entity	870 W. 2nd Ave Unit: D Eugene, OR 97402 County: Lane		
Phone No. of Originating Entity	541-255-9170		
Contact Phone No. for Inquiries: 8018824601			
1. Destination	SC Laboratories	Destination Phone No.	503-272-8838
Destination License Number	010-1004748743D	Date and Approx. Time of Departure	3/16/2021 1:40 PM
Address of Destination	15865 SW 74th Avenue Ste 110 Tigard, OR 97224 County: Washington	Date and Approx. Time of Arrival	3/16/2021 5:00 PM
		Date/Time Received	3/16/21 16:53
		Notes: details for extenuating circumstances (e.g., road closure, flat tire, etc.)	
Route to be Traveled Head east on W 2nd Ave toward Adams St Turn right onto Monroe St Turn right onto W 6th Ave Slight left onto W 5th Ave Turn right onto Seneca Rd Turn left onto W 1st Ave Turn left onto Grimes St Take S Bertelsen Rd and Roosevelt Blvd to OR-569 E Follow I-5 N to Lower Boones Ferry Rd in Tualatin. Take exit 290 from I-5 N Continue on Lower Boones Ferry Rd to your destination in Tigard			
Name of Person Transporting	Scott Forster	Handler Permit No. of Driver	SC Sampler
State Driver's License No.	A625521	Signature of Person Transporting	<i>[Signature]</i>
Make, Model, License Plate No.	Nissan Kicks 249 MGD		
1. Package I Shipped	Production Batch No.	Item Name	Quantity
1A4010300003909000014195 Lab Test: SubmittedForTesting		Fresh Squeezed OG Live Sauce (Bula-962B) (Extracts)	Shp: 7.2300 g
Item Details			
Source Harvest(s)	(multi-harvest)		
Source Package(s)	1A4010300003909000014139		
2. Package I Shipped	Production Batch No.	Item Name	Quantity
1A4010300003909000014197 Lab Test: SubmittedForTesting		Cherry Noir CRJ (Indigo-965) (Extracts)	Shp: 7.2000 g
Item Details			
Source Harvest(s)	Cherry Noir 4 GH R3 2020		
Source Package(s)	1A4010300003909000014146		
3. Package I Shipped	Production Batch No.	Item Name	Quantity
1A4010300003909000014198 Lab Test: SubmittedForTesting		Royal Sour Kush LLR (Indigo-966A) (Extracts)	Shp: 7.1800 g
Item Details			
Source Harvest(s)	RSK OD 2020		
Source Package(s)	1A4010300003909000014173		



**OREGON LIQUOR CONTROL COMMISSION
CANNABIS TRANSPORTATION MANIFEST**



21C0132
21C0131
21C0130

All sales transactions are to be completed prior to transportation of any CANNABIS. The receiving entity may reject product delivered, but amount delivered must be limited to amount agreed upon in prior sales transaction

Manifest No.	0003105196	Date Created	3/16/20.
4. Package I Shipped	Production Batch No.	Item Name	Quantity
1A4010300003909000014199 Lab Test: SubmittedForTesting		RETREATS: CBD Rec 10pk (BO-164-14187) (Edibles (each))	Shp: 2.0000 ea
Item Details	Wgt: 35 g		
Source Harvest(s)	Blue Orchid# 10/8/20		
Source Package(s)	1A4010300003909000014187		
5. Package I Shipped	Production Batch No.	Item Name	Quantity
1A4010300003909000014194 Lab Test: SubmittedForTesting		Blue Dream LCR (Tokyo-958) (Extracts)	Shp: 7.1400 g
Item Details			
Source Harvest(s)	(multi-harvest)		
Source Package(s)	1A4010300003909000014138		
6. Package I Shipped	Production Batch No.	Item Name	Quantity
1A4010300003909000014196 Lab Test: SubmittedForTesting		Angel Food Cake Live Rosin (WVALR12) (Concentrate)	Shp: 5.0600 g
Item Details			
Source Harvest(s)	AFC OD 2020 WFFF		
Source Package(s)	1A4010300003909000014129		
7. Package I Shipped	Production Batch No.	Item Name	Quantity
1A4010300003909000014200 Lab Test: SubmittedForTesting		RETREATS: High Dose Rec 2pk (Dist-165-14188) (Edibles (each))	Shp: 2.0000 ea
Item Details	Wgt: 13 g		
Source Harvest(s)	(multi-harvest)		
Source Package(s)	1A4010300003909000014188		
PRODUCT REJECTION (if only a portion of shipment is rejected, circle that portion above)			
Name of Person Receiving or Rejecting Product	Alfredo Montes de Oca		
I confirm that the contents of this shipment match weight records entered above, and I agree to take custody of those portions of this shipment <i>not</i> circled above. Those portions circled were returned to the individual delivering this shipment.			
Signature	<i>am</i>	Date	3/16/21
Signature of individual taking receipt of rejected portion of this shipment			

Client: Willamette Valley Alchemy Client License: 100096CBBC Date Sampled: 3/16/2021 Thermometer ID: T014
 Address Where Sampled: 870 W 2nd Ave unit: D Eugene, OR 97402 Requestor: Paul Sherman Event ID: 21C0131 Balance ID: SAMP_BAL_05
 Sampling SOP & Rev. #: SC-OR-SAMP-003 Sampler: Scott Forster Transporter: Scott Forster Hygrometer ID: Anemometer_02

Sampler Signature

Lab ORELAP ID: 4133
 Lab OLCC ID: 1004748743D

Weight used (g)	Weight Set ID	Acceptance Criteria	Initial Measured	Initial P/F	Final Measured	Final P/F
0.5	SAMP_CAL_05	±2.5%	0.5	P	0.5	P
200		±2.5%	199.96		199.96	



Container Type	METRC Harvest/Processing Lot ID #:				Product Type	Client Sample Name	Product Date	Batch Size (g)
Mason Jars	1A40103000390900014138				Concentrate	Blue Dream LCR (Tokyo-958)	3/2/2021	1070
METRC Batch ID	Product Temp (°C)	Humidity (%)	# of Containers	Sampling Media	# Zones	# of Inc.	1° Sample (g)	Sample Name
	18.8	56.1	2	vial	4	6	0.583333333	Blue Dream LCR (Tokyo-958) Primary
Lab Sample ID	Container ID		Increment Zone	Sampling Media Wt. (g)	Wt. Inc+Media (g)	Increment Weight (g)	Sample METRC ID#	
21C0131-01	Blue Dream LCR (Tokyo-958)-1		A1	0	0.59	0.59	14194	
21C0131-01	Blue Dream LCR (Tokyo-958)-1		A1	0.59	1.18	0.59	14194	
21C0131-01	Blue Dream LCR (Tokyo-958)-1		A2	1.18	1.77	0.59	14194	
21C0131-01	Blue Dream LCR (Tokyo-958)-1		A3	1.77	2.36	0.59	14194	
21C0131-01	Blue Dream LCR (Tokyo-958)-1		A3	2.36	2.95	0.59	14194	
21C0131-01	Blue Dream LCR (Tokyo-958)-2		B1	2.95	3.59	0.64	14194	
Totals:								
6			6		Total Primary Mass = 3.59		Primary + Duplicate Mass = 7.14 g	

Observations and Abnormalities:	Batch #	Equipment	Cont. Types/Sizes	Uniform	Plant Colors	Shape and Size	Sampling Plan ID & Rev. Date

METRC Batch ID	Product Temp (°C)	Humidity (%)	# of Containers	Sampling Media	# Zones	# of Inc.	1° Sample (g)	Sample Name
	18.8	56.1	2	vial	4	6	0.583333333	Blue Dream LCR (Tokyo-958) Duplicate
Lab Sample ID	Container ID		Increment Zone	Sampling Media Wt. (g)	Wt. Inc+Media (g)	Increment Weight (g)	Sample METRC ID#	
21C0131-02	Blue Dream LCR (Tokyo-958)-1		A1	0	0.59	0.59	14194	
21C0131-02	Blue Dream LCR (Tokyo-958)-1		A4	0.59	1.18	0.59	14194	
21C0131-02	Blue Dream LCR (Tokyo-958)-2		B1	1.18	1.77	0.59	14194	
21C0131-02	Blue Dream LCR (Tokyo-958)-2		B2	1.77	2.36	0.59	14194	
21C0131-02	Blue Dream LCR (Tokyo-958)-2		B2	2.36	2.95	0.59	14194	
21C0131-02	Blue Dream LCR (Tokyo-958)-2		B4	2.95	3.55	0.6	14194	

Totals:		6	6	Total Duplicate Mass = 3.55		Primary + Duplicate Mass = 7.14 g	
Observations and Abnormalities:	Batch #	Equipment	Cont. Types/Sizes	Uniform	Plant Colors	Shape and Size	Sampling Plan ID & Rev. Date

Container Type	METRC Harvest/Processing Lot ID #:				Product Type	Client Sample Name	Product Date	Batch Size (g)
Mason Jars	1A4010300003909000014139				Concentrate	Squeezed OG Live Sauce (Bula-	3/2/2021	928
METRC Batch ID	Product Temp (°C)	Humidity (%)	# of Containers	Sampling Media	# Zones	# of Inc.	1° Sample (g)	Sample Name
	18.8	56.1	2	vial	4	6	0.58333333	Fresh Squeezed OG Live Sauce (Bula-962B) Prima
Lab Sample ID	Container ID		Increment Zone	Sampling Media Wt. (g)	Wt. Inc+Media (g)	Increment Weight (g)	Sample METRC ID#	
21C0131-03	Fresh Squeezed OG Live Sauce (Bula-962B)-1		A2	0	0.59	0.59	14195	
21C0131-03	Fresh Squeezed OG Live Sauce (Bula-962B)-2		B1	0.59	1.18	0.59	14195	
21C0131-03	Fresh Squeezed OG Live Sauce (Bula-962B)-2		B2	1.18	1.77	0.59	14195	
21C0131-03	Fresh Squeezed OG Live Sauce (Bula-962B)-2		B2	1.77	2.36	0.59	14195	
21C0131-03	Fresh Squeezed OG Live Sauce (Bula-962B)-2		B3	2.36	2.95	0.59	14195	
21C0131-03	Fresh Squeezed OG Live Sauce (Bula-962B)-2		B3	2.95	3.6	0.65	14195	
Totals:		6	6	Total Primary Mass = 3.6		Primary + Duplicate Mass = 7.23 g		

Observations and Abnormalities:	Batch #	Equipment	Cont. Types/Sizes	Uniform	Plant Colors	Shape and Size	Sampling Plan ID & Rev. Date

METRC Batch ID	Product Temp (°C)	Humidity (%)	# of Containers	Sampling Media	# Zones	# of Inc.	1° Sample (g)	Sample Name
	18.8	56.1	2	vial	4	6	0.58333333	Fresh Squeezed OG Live Sauce (Bula-962B) Duplita
Lab Sample ID	Container ID		Increment Zone	Sampling Media Wt. (g)	Wt. Inc+Media (g)	Increment Weight (g)	Sample METRC ID#	
21C0131-04	Fresh Squeezed OG Live Sauce (Bula-962B)-1		A2	0	0.59	0.59	14195	
21C0131-04	Fresh Squeezed OG Live Sauce (Bula-962B)-1		A3	0.59	1.18	0.59	14195	
21C0131-04	Fresh Squeezed OG Live Sauce (Bula-962B)-1		A3	1.18	1.77	0.59	14195	
21C0131-04	Fresh Squeezed OG Live Sauce (Bula-962B)-2		B3	1.77	2.36	0.59	14195	
21C0131-04	Fresh Squeezed OG Live Sauce (Bula-962B)-2		B4	2.36	2.95	0.59	14195	
21C0131-04	Fresh Squeezed OG Live Sauce (Bula-962B)-2		B4	2.95	3.63	0.68	14195	

CHAIN OF CUSTODY

SC Laboratories Oregon LLC
 15865 SW 74th Avenue, Ste 110
 Tigard OR, 97224
 (503) 272-8630
 ORELAP ID # 4133
 www.scilabs.com

Client: **Willamette Valley Alchemy**
 Address Where Sampled: **870 W 2nd Ave unit: D Eugene, OR 97402**
 Date Sampled: **3/16/2021**
 OLCC License #: **100096CBB**
 OLCC License Type: **Processor**
 Email: **ettevalley@alchemy.com**
 Phone: **541.255.9170**
 Sampler OLCC License #: **010-1004746743D**

COC #: **21C0131**
 Work Order #: **21C0131**
 Received By: **AM**
 Received Date: **3/16/21**
 Courier: **Scott Forster**
 Name of Sampler: **Scott Forster**
 Transfer Manifest #: **3105 L.A.G**
 Place where Sampled: **870 W 2nd Ave unit D Eugene, OR 97402**

Sample Type Legend
 U - Usable Marijuana
 C - Concentrate
 P - Product
 O - Other



Sample Name	Time	METRC Label	Unique Batch Number	SC Labs LIMS ID	Sample Type	Total Sample Mass	# of Increments	TESTS REQUESTED					Sample Specific Notes
								Potency	Water Activity	Moisture Content	Pesticide	Residual Solvent	
Blue Dream LCR (Tokyo-958) Primary		14194	Blue Dream LCR (Tokyo-958)	21C0131-01	C	3.59	6	X	X	X	X	X	
Blue Dream LCR (Tokyo-958) Duplicate		14194	Blue Dream LCR (Tokyo-958)	21C0131-02	C	3.55	6	X	X	X	X	X	
Fresh Squeezed OG Live Sauce (Bula-962B) Primary		14195	Fresh Squeezed OG Live Sauce	21C0131-03	C	3.6	6	X	X	X	X	X	
Fresh Squeezed OG Live Sauce (Bula-962B) Duplicate		14195	Fresh Squeezed OG Live Sauce	21C0131-04	C	3.63	6	X	X	X	X	X	
Cherry Noir CRJ (Indigo-965) Primary		14197	Cherry Noir CRJ (Indigo-965)	21C0131-05	C	3.59	4	X	X	X	X	X	
Cherry Noir CRJ (Indigo-965) Duplicate		14197	Cherry Noir CRJ (Indigo-965)	21C0131-06	C	3.61	4	X	X	X	X	X	
Royal Sour Kush LLR (Indigo-966A) Primary		14198	Royal Sour Kush LLR (Indigo-966A)	21C0131-07	C	3.59	6	X	X	X	X	X	
Royal Sour Kush LLR (Indigo-966A) Duplicate		14198	Royal Sour Kush LLR (Indigo-966A)	21C0131-08	C	3.55	6	X	X	X	X	X	

Notes/Special Considerations: Opt OUT of Sample Duplicate Yes No

Samples Relinquished	Samples Received
Print Name: Austin C Date: 3/16/21 Representative of: WVA Signature: <i>[Signature]</i> Time: 1:30	Print Name: Scott F Date: 3/16/21 Representative of: SC Labs Signature: <i>[Signature]</i> Time: 1:30